

MAX STEEL®



COST EFFICIENT



BUILT TO LAST



LIGHT WEIGHT



FIRE RESISTANT



QUICK TO INSTALL



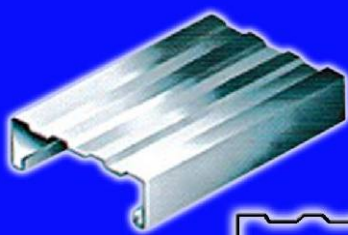
TERMITE PROOF



ENVIRONMENT FRIENDLY



METAL CEILING ASSEMBLY



DOUBLE FURRING CHANNEL

19mm x 50mm x 5.0mtrs

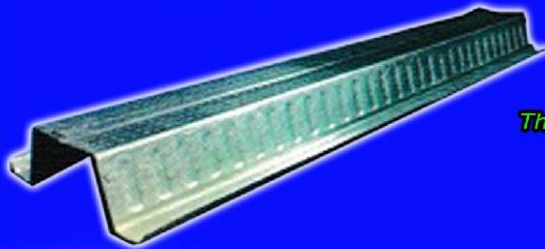
Thickness: 0.40mm, 0.50mm, 0.60mm



CARRYING CHANNEL

12mm x 38mm x 5.0mtrs

Thickness: 0.70mm, 0.80mm, 0.90mm

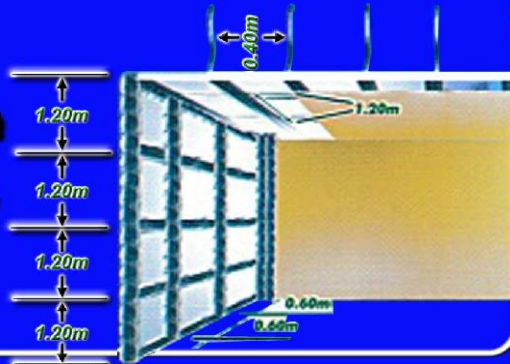


METAL BATTENS

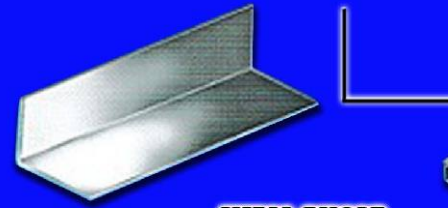
20mm x 70mm x 5.0mtrs

Thickness: 0.40mm, 0.50mm, 0.60mm

MAX Matibay na
MAX Mura pa!



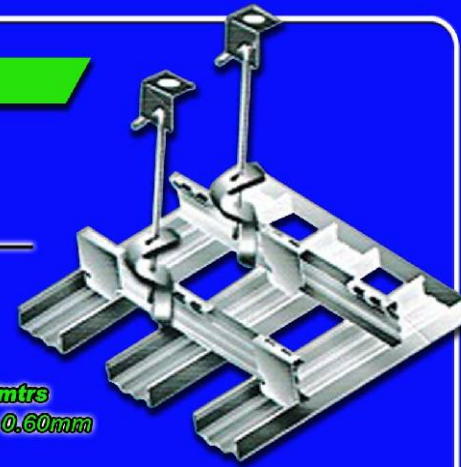
METAL ACCESSORIES



WALL ANGLE

25mm x 25mm x 2.40/3.00mtrs

Thickness: 0.40mm, 0.50mm, 0.60mm



DOUBLE FURRING CLIP

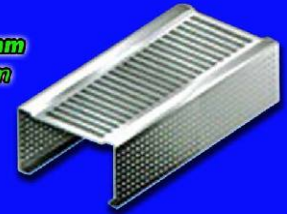
25mm x 25mm

METAL DRY WALL PARTITION

METAL STUDS

Available Sizes: • 64mm • 76mm

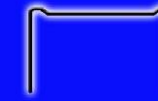
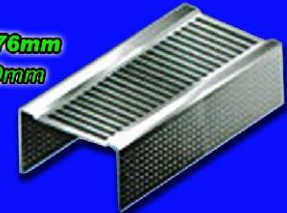
Thickness: 0.50mm, 0.60mm



METAL TRACKS

Available Sizes: • 64mm • 76mm

Thickness: 0.50mm, 0.60mm



MAX STEEL®

266 N. Domingo St., Brgy. Pasadena, San Juan City, Philippines

Tel. Nos. 936-16-69 / 650-46-16 / 727-29-93 FAX 414-07-19 / 414-06-93

E-mail: diatech@pltdsl.net • sales@maxsteel.com.ph • Website: www.maxsteel.com.ph